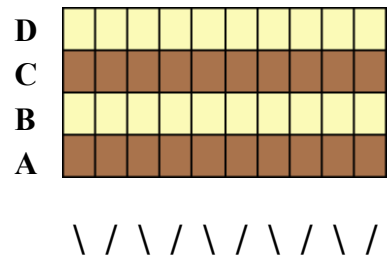


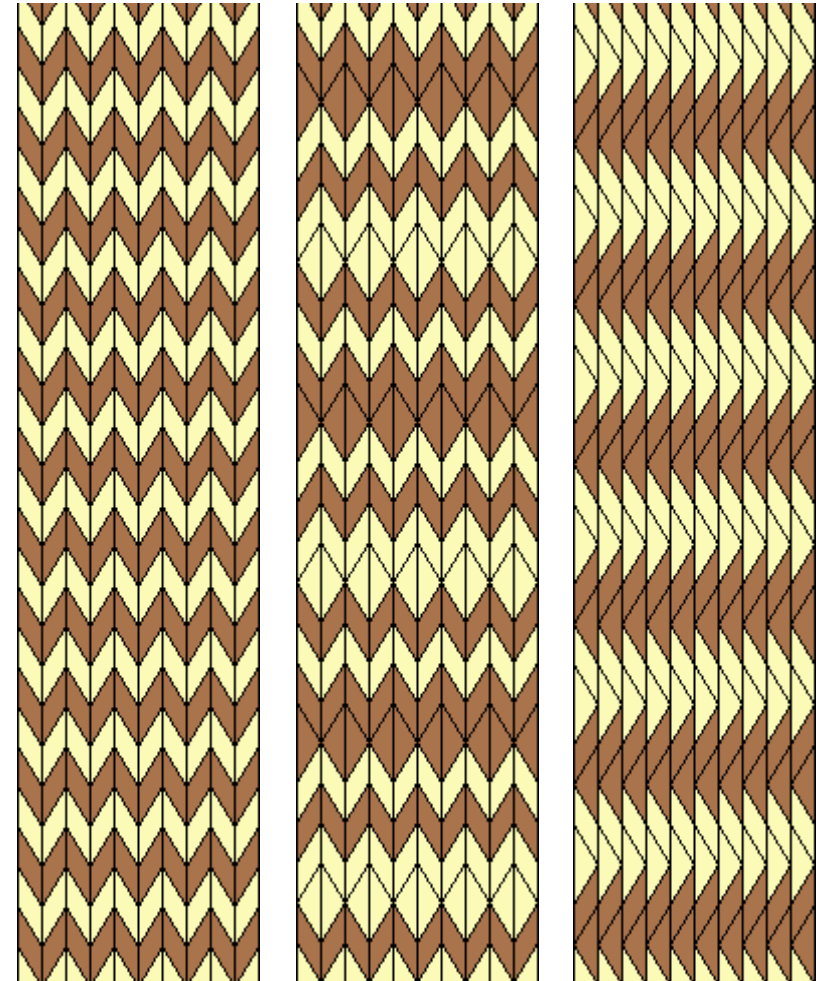
Tablet weaving. Basic pattern: weftwise stripes

Weftwise stripes 1 x 1.

Threading diagram:

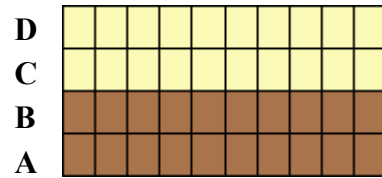


Narrow weftwise stripes can be woven in two, three or four colours. Threading diagram above uses just two colours for clarity. The width of the stripes depends on the technique used. If tablets are turned continuously in one direction, the stripes will be narrow, while by changing turning direction of tablets in sequence wider stripes can be achieved. However, optimum width of stripes woven with this threading is two, maximum three rows as a single warp thread per tablet will be remaining on the surface of the band to form a wider stripe. Longer warp threads on the surface might become loose and will not look good. On diagrams from right to left: 1 – tablets' position alternates as per threading diagram, tablets turned continuously in one direction; 2 – tablets' position alternates as per threading diagram, tablets are turned 4 times forward, 4 times back; 3 – tablets' position is the same, all tablets are turned 2 times forward, 2 times back.



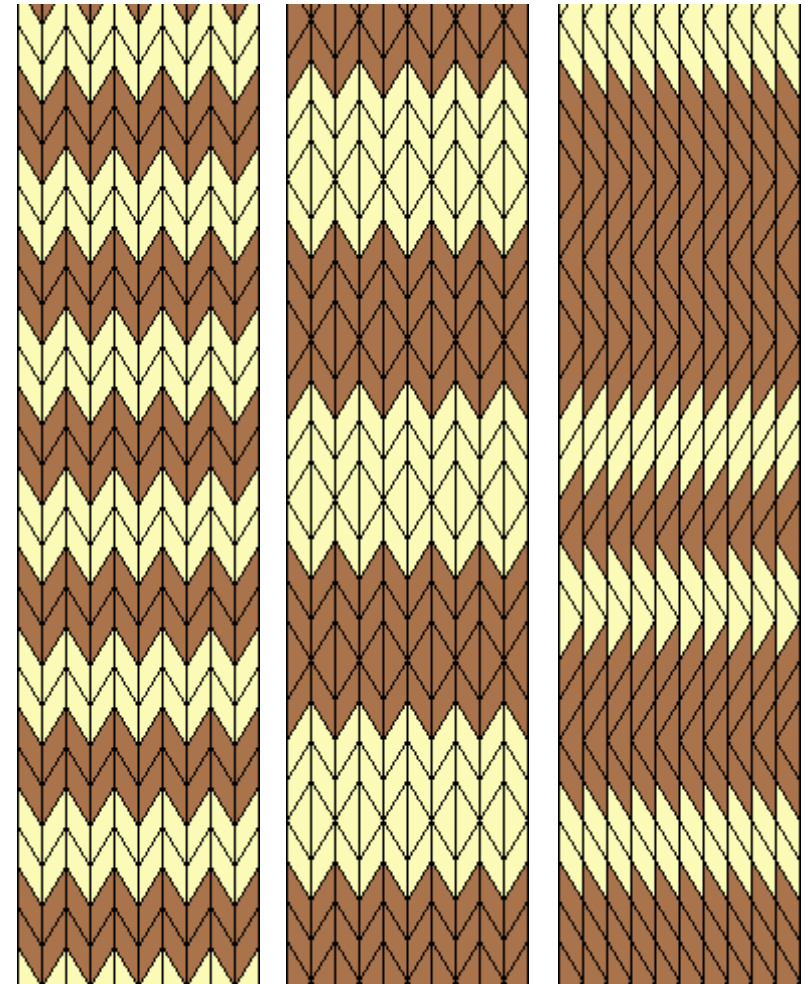
Weftwise stripes 2x2.

Threading diagram:



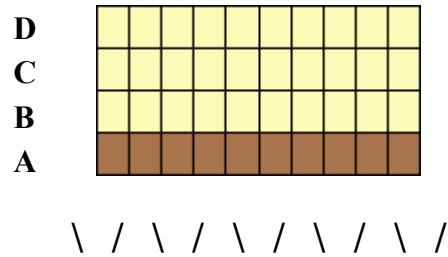
\ / \ / \ / \ / \ /

Wide weftwise stripes will be produced based on this threading by turning tablets continuously in one direction. By turning tablets in cycles on 4 turns the width of the stripes can be doubled, playing with even numbers of turns in cycles give almost endless options for stripes' width. This threading also allows to weave a band that will carry only one colour on each side - this is the basics for doubleface technique. On diagrams from left to right: 1 – position of tablets alternates as per threading diagram, all tablets are continuously turned in one direction; 2 – position of tablets alternates as per threading diagram, tablets are turned 4 times forward and 4 times back; 3 – all tablets are in the same position and are turned in arbitrary cycles.



Weftwise stripes 1x3.

Threading diagram:



This threading gives endless opportunities to create stripes of very different width. The stripe woven in colour of one thread per tablet should not be over 3 rows wide as single thread running over many rows might get too loose. There's no limit to the width of stripes in other colour. On diagrams left to right: 1 - position of tablets alternates as per threading diagram, tablets are continuously turned in one direction; 2 - position of tablets alternates as per threading diagram, tablets are turned 4 times forward, 4 times back, cycle A-B-C-D; 3 - position of tablets alternates as per threading diagram, tablets are turned 4 times forward, 4 times back, cycle C-D-A-B; 4 - all tablets are in the same position, tablets are turned 2 times forward, 2 times back, cycle D-A-A-D.

